

The Juliana Lee Team Presents
1177 REDROCK CT
SUNNYVALE



JULIANA LEE
TEAM

HOME FEATURES

- 3 bedrooms
- 2 baths
- 1,1108 sq.ft. space
- 8,000 sq.ft. lot
- Remodeled
- Mini-split heat pump
- Lot approved for 1,000 sf ADU

tour & details



Juliana Lee
BROKER

JLee Realty

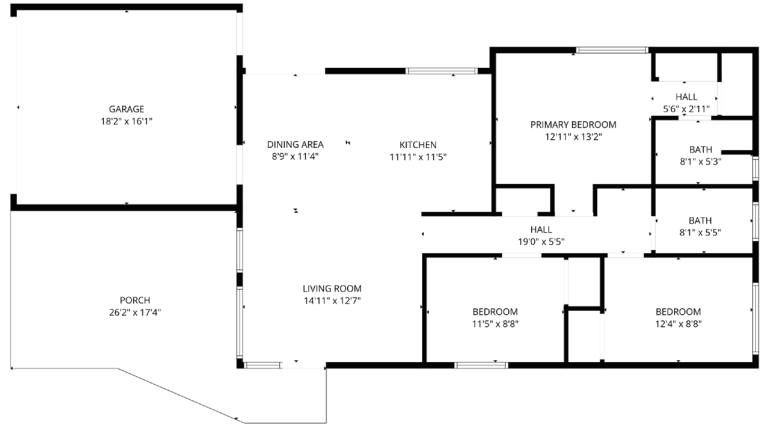
dre: 00851314 / 02103053

JulianaLee.com | 650.857.1000

Located at the end of a short court, on an 8,000 sq.ft. lot, with a greenbelt behind, this delightful home provides tranquility and ample space for a large garden. The trapezoidal lot maximizes the backyard for your private uses.

The modern kitchen features stainless steel appliances, stained wood cabinets, a tile floor, and recessed lighting. It is open to the dining area and provides flexible space. The dining area is also open to the living room. The living room has views looking out through windows on three sides, gleaming wood plank flooring, and recessed lighting.

Many restaurants are a short walk away as is the Lakewood Shopping Center. This house is located about 0.5 miles from light rail. Commute routes are easily reached.



NEARBY ATTRACTIONS

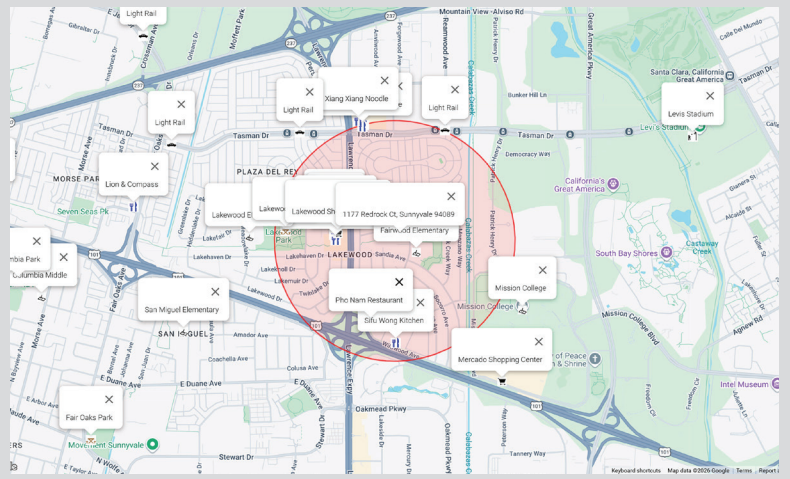
Short walk to:

- Fairwood Park
- Lakewood Park
- Saigon Seafood Harbor
- New Wing Yuan Mkt
- Saigon Sea Food Harbor
- Lakewood Shopping Center
- Hunan Mifen
- Giovanni's New York Pizzeria
- Ming Tasty
- Homi Japanese Ramen
- NoodlePanda
- Pho Nam Restaurant
- Sifu Wong Kitchen
- Fairwood Elementary

- Pho Queen Noodle House
- Xiang Xiang Noodle
- Light Rail

Short bike ride to:

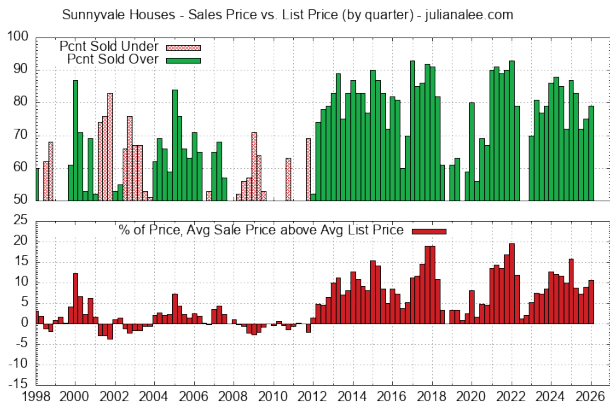
- Mission College
- Mercado Shopping Center
- Levi's Stadium



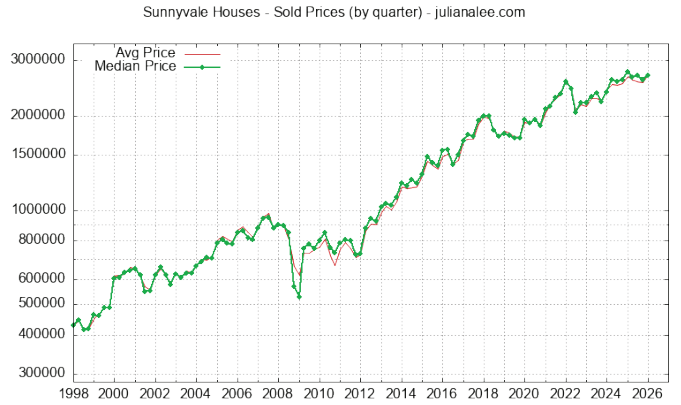
Red circle marks 0.5 miles around 1177 Redrock Ct, Sunnyvale CA 94089

REAL ESTATE TRENDS

Sales Price vs. List Price for Sunnyvale Houses Sold



Sales Price for Sunnyvale Houses Sold







JULIANA LEE
TEAM

JLee Realty

4260 El Camino Real
Palo Alto, CA 94306

(Adjacent to Crowne Plaza Hotel)



virtual tour: julianalee.com/1177redrockct

The Juliana Lee Team



JulianaLee.com | 650.857.1000 | homes@julianalee.com