



JLEE REALTY



**2222 RASPBERRY LN**  
**MOUNTAIN VIEW 94043**

# BEAUTIFUL NEWER TOWNHOUSE, GREAT LOCATION

Walk to cafes and shops. Bicycle to Google. Caltrain is a 1.1 mile walk. Located away from thru streets but with easy access to commute routes, this great Mountain View location puts you in the center of Silicon Valley while still providing a tranquil home.

This beautiful townhouse, at the “far end (one entrance)” of the common area between buildings, has an attractive iron fence around the front yard patio giving you a delightful, tranquil front yard “park”. Inside this home, a modern blue and white kitchen provides you with ample space for meal preparation and has a breakfast bar pass-thru separating it from the formal dining area. The formal dining area is open to the living room. The living room looks out over the front yard “park”, has a gleaming wood plank floor and a coffered ceiling. The family room, located behind the kitchen, provides separation from the main public area. Two top floor ample sized bedrooms are on opposite sides of a bathroom. The laundry closet is also upstairs.

3 bedrooms

2.5 bathrooms

2 car attached garage

Living space: 1,703 SQ.FT.

Living & Family rooms

---

**PRICE UPON REQUEST**



**Juliana Lee Team**  
**650-857-1000**

[JulianaLee.com/2222rasberryIn](http://JulianaLee.com/2222rasberryIn)







**DINING ROOM**

Open to kitchen • Wood Plank Floor





**LIVING ROOM**

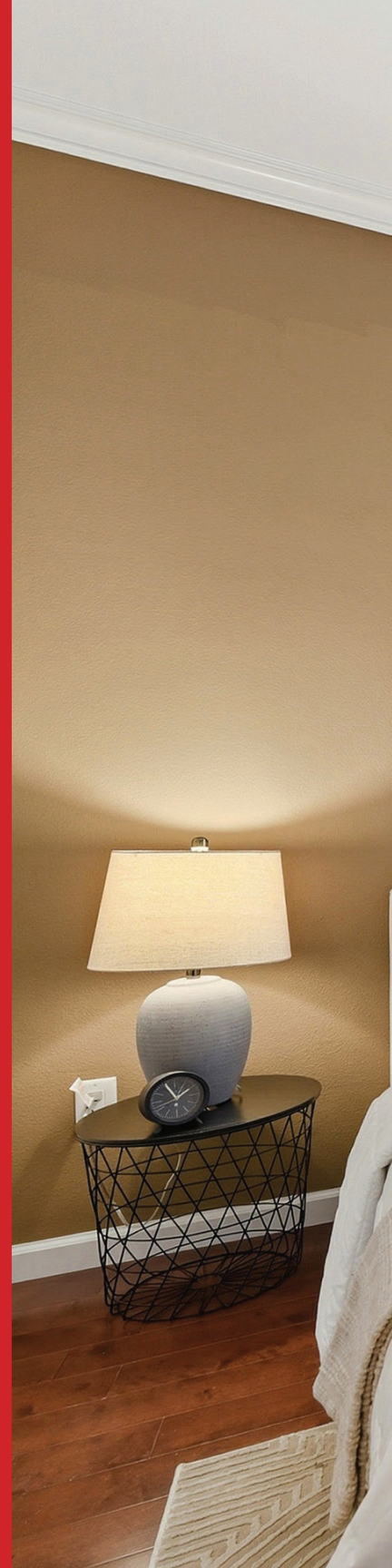
Open to dining • Coffered ceiling • Wood plank floor





**KITCHEN**

Low stone backsplash • Gas range • Microwave • Tile floor





**PRIMARY SUITE**

Window view of patio • Wood plank floor • Recessed lighting

# 2222 RASPBERRY LN • MOUNTAIN VIEW

## Home Features

- Living space: 1,703 sq.ft.
- 3 bedrooms, 2.5 bathrooms
- Built 2008
- Inside laundry
- Two car attached garage
- Monta Loma Elementary, Crittenden Middle, Los Altos High

## Kitchen

- Stainless steel appliances
- Free standing gas range
- Blue cabinets (white cabinets over range)
- Nearly white polished stone counter tops
- Low polished stone back splash
- Tile floor
- Kitchen breakfast bar is open to dining area

## Living Room

- Coffered ceiling & Wood plank floor
- Open to dining area and kitchen bar beyond

## Family Room

- Coffered ceiling & Wood plank floor

## Primary Suite

- Recessed lighting
- Wood plank floor (other two bedrooms have carpeted floor)
- Windows looking out to front patio and side of community
- Sliding door closet
- Stained wood vanity with polished stone counter-top and recessed sink
- Tile bathroom floor
- Shower over tub with sliding glass doors and tile surround

## Exterior

Attractive exterior with 4 gables on front of home  
Front yard patio with iron fence  
Landscaped common area in front

## NEARBY ATTRACTIONS

### Short walk to:

- Starbucks
- Safeway
- Costco
- Crossroads Specialty Foods
- Papas and Eggs
- Bajis Cafe
- The Midwife and The Baker
- Cas Mia Restaurant
- Hyderabad Dum Diryani
- Los Altos Taqueria
- Sonora Taqueria
- Hanabi Sushi
- Chipotle
- Thaddeus Park
- Heritage Park
- Sierra Vista Park

### Moderate walk to:

- San Antonio Shopping Center
- Trader Joes
- Walmart
- Rengstorff Park
- Rengstorff Tennis Courts
- Caltrain

### Short bike ride to:

- Shoreline Park
- Downtown Mountain View

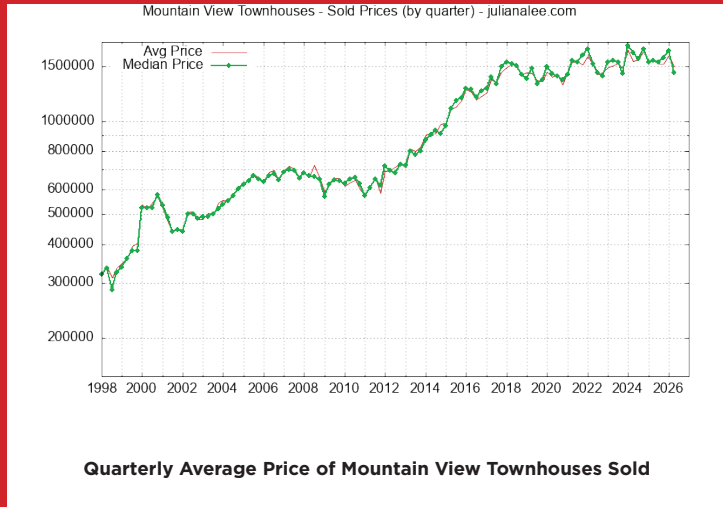


\*Red circle marks 0.5 miles around 2222 Raspberry Ln, Mountain View 94043

# LOCAL REAL ESTATE TRENDS

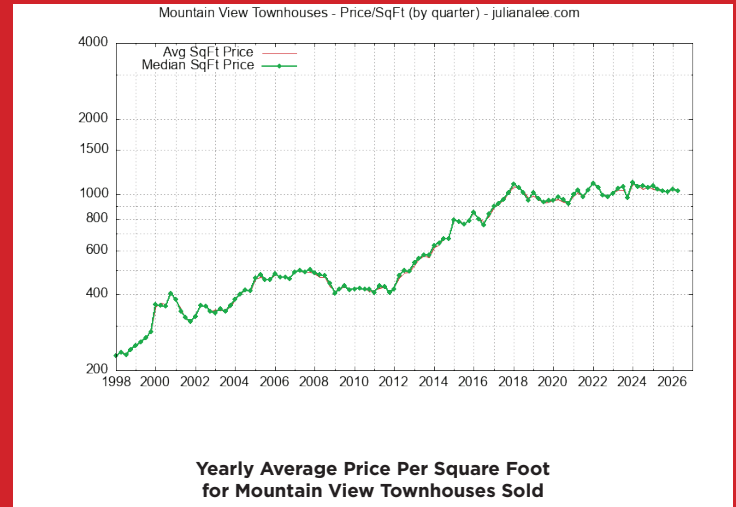
## Average and Median Home Price of Mountain View Townhouses Sold

When trying to understand Mountain View neighborhood values for homes the first and most often real estate trend looked at is either average or median home sales price. The average price can be pushed up by a particularly expensive home being sold. Much less often an especially low price for one or more homes can push the average price down. By looking at both average and median price a quick judgment can be made about any unusually high or low prices.



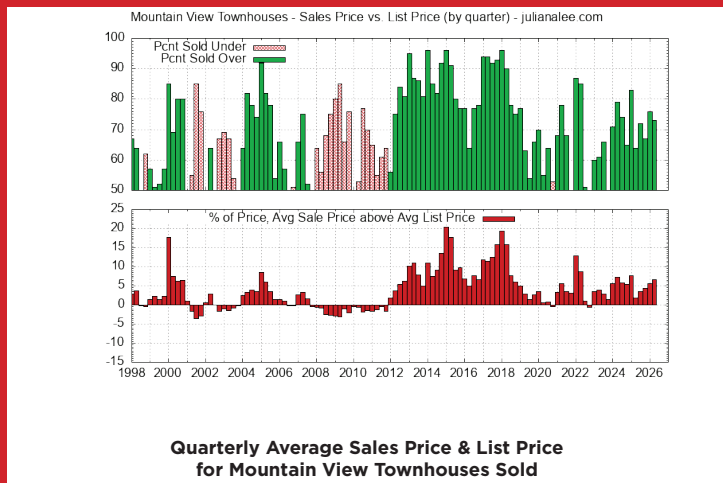
## Price Per Square Foot for Mountain View Townhouses Sold

The sales price of a Mountain View home is affected by its size. Looking at price per square foot gives a partial adjustment for differences between homes. Furthermore if you look at the average size of a Mountain View home sold you will see that it varies with time. Part of the variation is due to the random nature of which homes are being sold but the trend is for an increase in size with time because when a home is replaced with a newer home, the newer home is almost always larger.



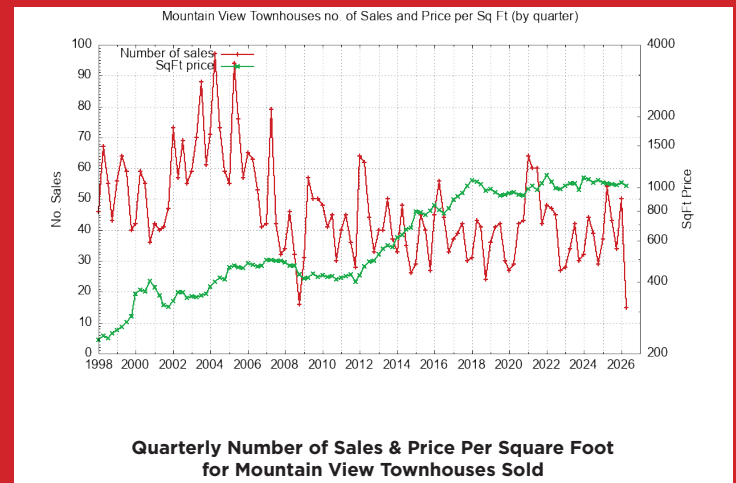
## Sales vs. List Price for Mountain View Townhouses

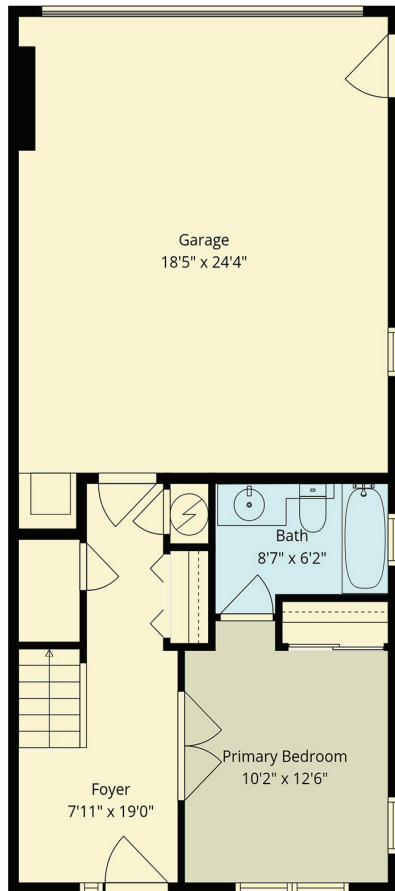
Home buyers and sellers want to know the typical relationship between list price and sales price. This relationship varies with city and time. The plots below show trends for this relationship using color coding which generally highlights changes in the market. More Mountain View homes being sold over list price is a very good indicator of rising home prices. More homes being sold under list price is a very good indicator of falling home prices.



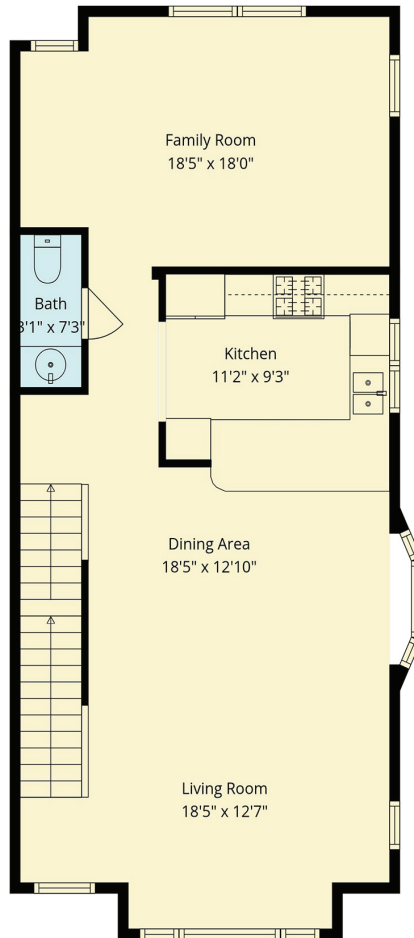
## Number of Mountain View Townhouses Sold

A quick estimate of how active the Mountain View real estate market is, can be found by looking at the number of home sold. Locally there is a strong seasonal change in the number of homes sold. The lowest number of homes sold typically occurs around December & January. The highest number of homes sold typically occurs around May. Price changes do not track the seasonal change in the number of homes sold.

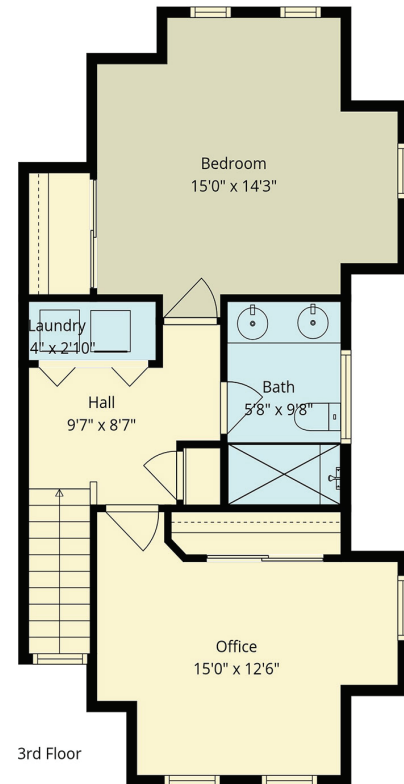




1st Floor



2nd Floor



3rd Floor

f/8

**TOTAL: 1653 sq. ft**

1st floor: 340 sq. ft, 2nd floor: 775 sq. ft, 3rd floor: 538 sq. ft

EXCLUDED AREAS: GARAGE: 407 sq. ft, BAY WINDOW: 7 sq. ft, WALLS: 165 sq. ft

Floor Plan Created by Cubicasa App. Measurements Deemed Highly Reliable But Not Guaranteed.



JLEE REALTY

[JulianaLee.com/2222raspberryln](http://JulianaLee.com/2222raspberryln)



**JLEE REALTY**

4260 El Camino Real,  
Palo Alto, CA 94306

---

[JulianaLee.com](http://JulianaLee.com) | [650.857.1000](tel:650.857.1000) | [homes@julianalee.com](mailto:homes@julianalee.com)

---

*"We believe honesty,  
integrity, hard work,  
commitment and creativity  
are all necessary to craft a  
truly successful real estate  
transaction. We bring  
passion for our work to  
every transaction."*



**Juliana Lee 李文**  
MBA/LL.B.

Team Leader JLee Realty 00851314  
Pinnacle Realty Advisors 02220139

李文房地產做的最好

Over 30 Years of Experience in 30+ Silicon Valley Cities