



JLEE REALTY



4785 CORRALES DR
SAN JOSE

WONDERFUL HOME WITH LARGE OPEN LIVING ROOM + FAMILY ROOM

This delightful home has a 27 ft. long living room + family room with a large picture window looking out to the backyard and sliding glass doors leading out to the backyard patio. The family room has a white block fireplace with gas logs, that is visible from both the living room and dining room.

The cheerful kitchen has bright white cabinets, tile counter tops, gas cooktop, built-in electric oven, stainless steel sink, a laminate floor, and a window looking out to the front porch.

Although located in a peaceful residential neighborhood, cafes, markets, and parks are only a short walk away. Commute routes are easily reached.

3 bedrooms

2 bathrooms

Living space: 1,385 SQ.FT.

LOT: 6,295 SQ.FT.

Large living+family room

PRICE UPON REQUEST



Juliana Lee Team
650-857-1000

JulianaLee.com/4785corralesdr







DINING ROOM

Open to family room • Laminate floor • Open to kitchen





LIVING ROOM

Open to family room • Laminate floor • Fireplace





KITCHEN

Open to dining area • Tile counter tops • Gas cooktop • Electric oven





PRIMARY SUITE

Laminate floor • Triple sliding door closet

4785 CORRALES DR • SAN JOSE • 95136

Home Features

- Living space: 1,385 sq.ft.
- Lot size: 6,295 sq.ft.
- 3 bedrooms, 2 bathrooms
- Terrell Elementary, Muir Middle, Gunderson High

Kitchen

- White appliances
- Gas cooktop
- Black glass doored built-in oven
- White recessed panel cabinets
- Tile counter tops
- High tile back splash
- Wood plank floor (laminated)

Living Room

- Open to family room
- Wood plank floor (laminated)
- View of backyard through very large picture window

Family Room

- Open to living room
- Wood plank floor (laminated)
- White block fireplace with gas log
- Sliding glass door to backyard patio

Primary Suite

- Wood plank floor (laminated)
- Windows looking out to front yard
- Sliding triple-door closet
- White vanity with synthetic stone top and recessed sink
- Tile bathroom floor (marble?)
- Stall shower with tile surround and glass door

Exterior

- Stucco exterior
- Landscaped front yard with lemon tree, beds for flowers
- Fenced back yard with patio
- Fruit trees

NEARBY ATTRACTIONS

Short walk to:

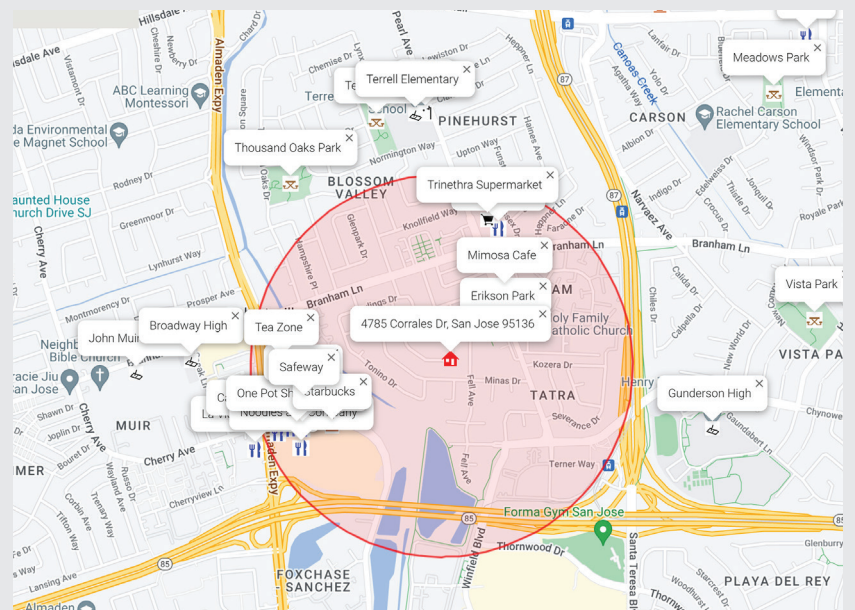
- Erikson Park
- Mimosa Cafe
- Layla's Bistro
- Trinethra Supermarket
- Tea Zone
- Safeway
- Starbucks
- One Pot Shabu Shabu
- California Fish Grill
- Panera Bread
- California Habit Burger
- Noodles and Company
- La Victoria Taqueria

Moderate walk to:

- Terrell Elementary
- Muir Middle
- Gunderson High School

Short bike ride to:

- Almaden Lake Park

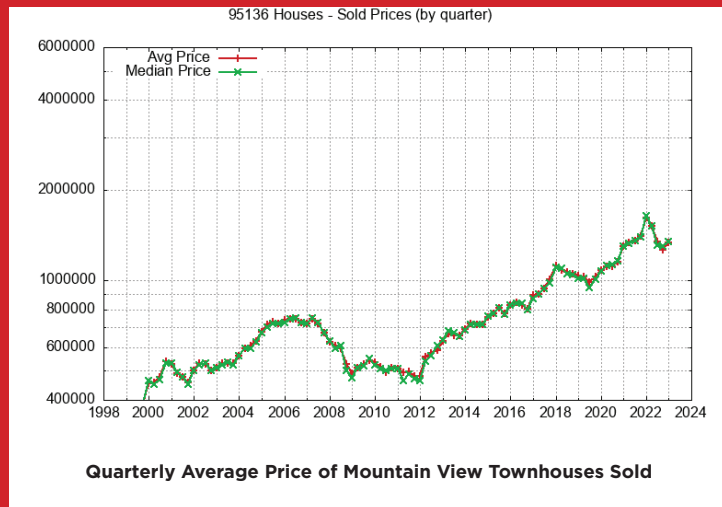


*Red circle marks 0.5 miles around 4785 Corrales Dr, San Jose 95136

LOCAL REAL ESTATE TRENDS

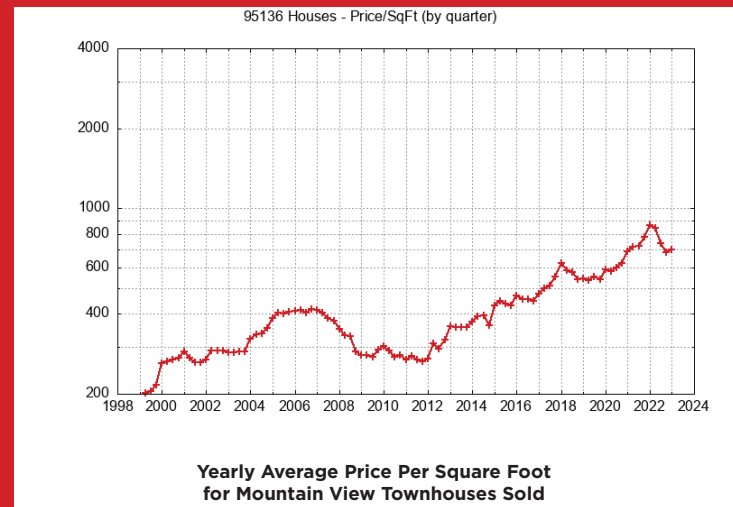
Average and Median Home Price of 95136 Homes Sold

When trying to understand 95136 neighborhood values for homes the first and most often real estate trend looked at is either average or median home sales price. The average price can be pushed up by a particularly expensive home being sold. Much less often an especially low price for one or more homes can push the average price down. By looking at both average and median price a quick judgment can be made about any unusually high or low prices.



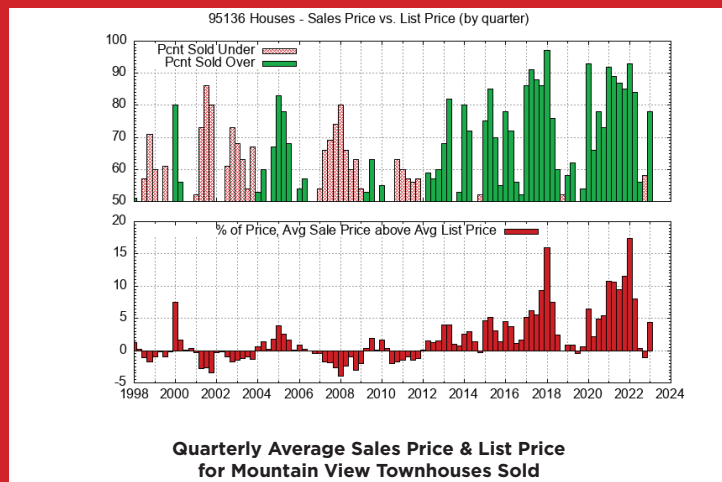
Price Per Square Foot for 95136 Homes Sold

The sales price of a 95136 home is affected by its size. Looking at price per square foot gives a partial adjustment for differences between homes. Furthermore if you look at the average size of a 95136 home sold you will see that it varies with time. Part of the variation is due to the random nature of which homes are being sold but the trend is for an increase in size with time because when a home is replaced with a newer home, the newer home is almost always larger.



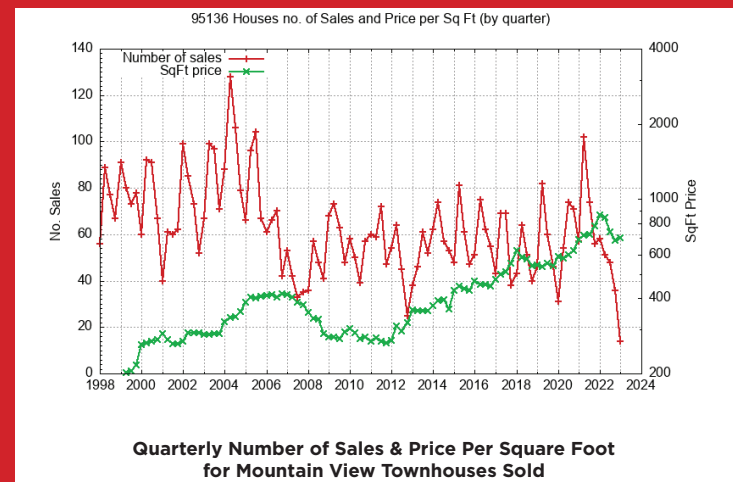
Sales Price vs. List Price for 95136 Homes

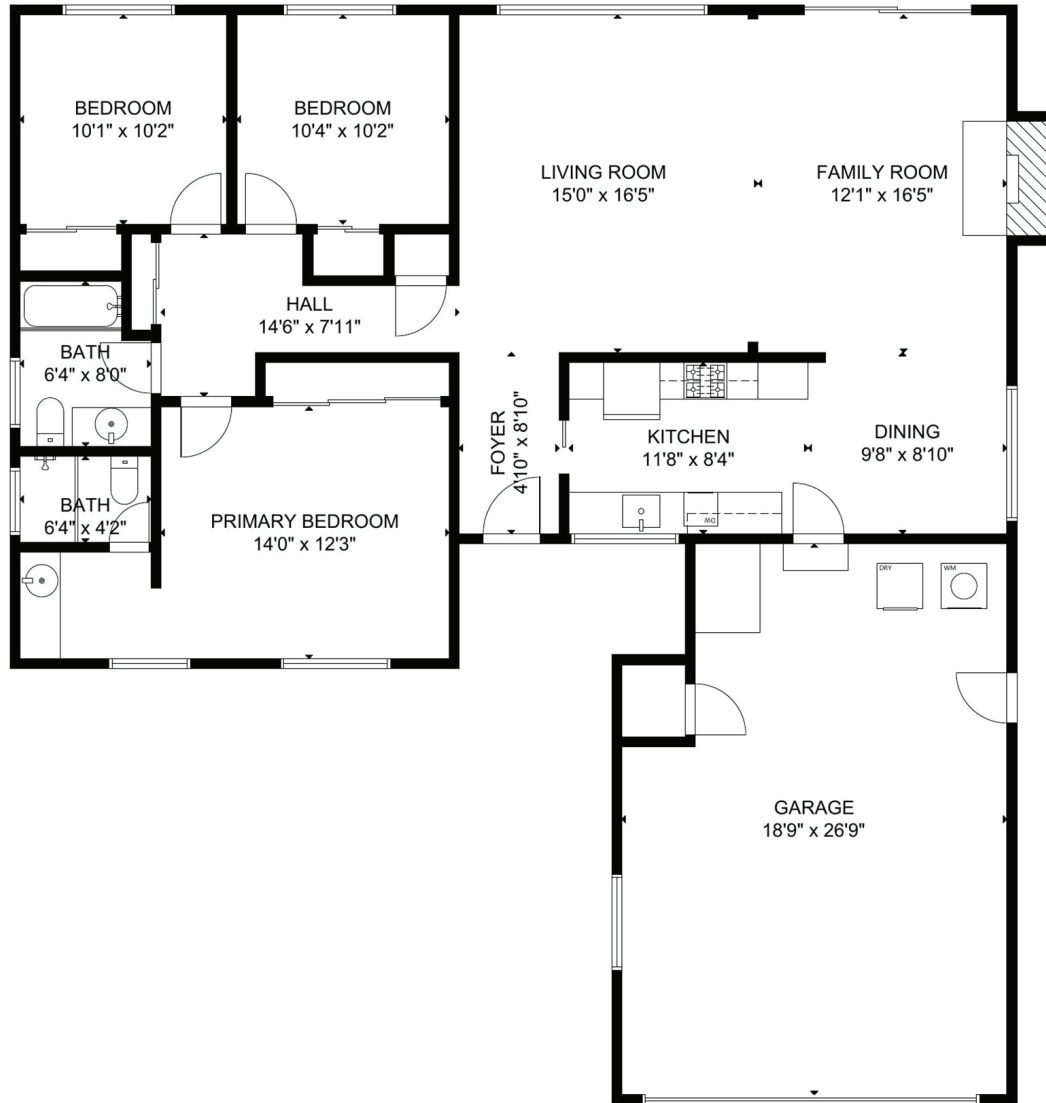
Home buyers and sellers want to know the typical relationship between list price and sales price. This relationship varies with city and time. The plots below show trends for this relationship using color coding which generally highlights changes in the market. More 95136 homes being sold over list price is a very good indicator of rising home prices. More homes being sold under list price is a very good indicator of falling home prices.



Number of 95136 Homes Sold

A quick estimate of how active the 95136 real estate market is, can be found by looking at the number of home sold. Locally there is a strong seasonal change in the number of homes sold. The lowest number of homes sold typically occurs around December & January. The highest number of homes sold typically occurs around May. Price changes do not track the seasonal change in the number of homes sold.





GROSS INTERNAL AREA

TOTAL: 1,350 sq ft

FLOOR 1: 1,350 sq ft

EXCLUDED AREA: GARAGE: 481 sq ft

SIZE AND DIMENSIONS ARE APPROXIMATE, ACTUAL MAY VARY.



JulianaLee.com/4785corralesdr



JLEE REALTY

4260 El Camino Real,
Palo Alto, CA 94306

JulianaLee.com | 650.857.1000 | homes@julianalee.com

*"We believe honesty,
integrity, hard work,
commitment and creativity
are all necessary to craft a
truly successful real estate
transaction. We bring
passion for our work to
every transaction."*



Juliana Lee 李文

MBA/LL.B.

Team Leader/Broker

dre# 00851314/ 02103053

李文房地產做的最好

Over 30 Years of Experience in 30+ Silicon Valley cities