

The Juliana Lee Team Presents  
**4785 CORRALES DR**  
SAN JOSE



**JULIANA LEE**  
TEAM

**HOME FEATURES**

- 3 bedrooms
- 2 bathrooms
- 1,385 sq.ft. space
- 6,295 sq.ft. lot
- Living room +
- Family room

Walk to cafes and shops.

[tour & details](#)



**Juliana Lee**

**BROKER**

**JLee Realty**

dre: 00851314 / 02103053

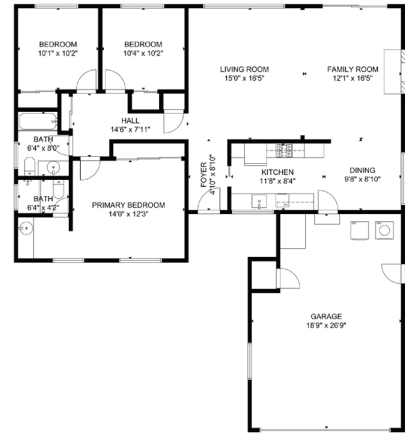
[JulianaLee.com](http://JulianaLee.com) | 650.857.1000

# 4785 CORRALES DR | SAN JOSE

This delightful home has a 27 ft. long living room + family room with a large picture window looking out to the backyard and sliding glass doors leading out to the backyard patio. The family room has a white block fireplace with gas logs, that is visible from both the living room and dining room.

The cheerful kitchen has bright white cabinets, tile counter tops, gas cooktop, built-in electric oven, stainless steel sink, a laminate floor, and a window looking out to the front porch.

Although located in a peaceful residential neighborhood, cafes, markets, and parks are only a short walk away. Commute routes are easily reached.



FLOOR 1  
GROSS INTERNAL AREA  
TOTAL: 1,150 sq ft  
FLOOR 1: 1,150 sq ft  
EXCLUDED AREA: GARAGE: 481 sq ft  
SEE ARCHITECTURAL PLAN FOR DIMENSIONS. © 2024 SAN JAY REALTY

## NEARBY ATTRACTIONS

### Short walk to:

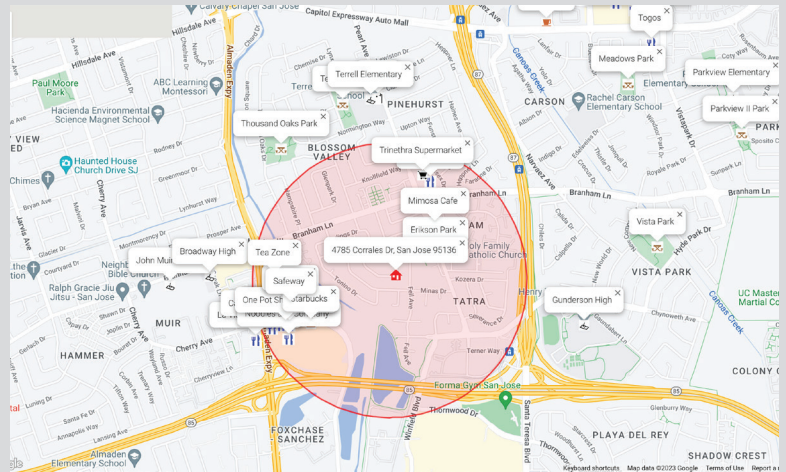
- Erikson Park
- Mimosa Cafe
- Layla's Bistro
- Trinethra Supermarket
- Tea Zone
- Safeway
- Starbucks
- One Pot Shabu Shabu
- California Fish Grill
- Panera Bread
- California Habit Burger
- Noodles and Company
- La Victoria Taqueria

### Moderate walk to:

- Terrell Elementary
- Muir Middle
- Gunderson High School

### Short bike ride to:

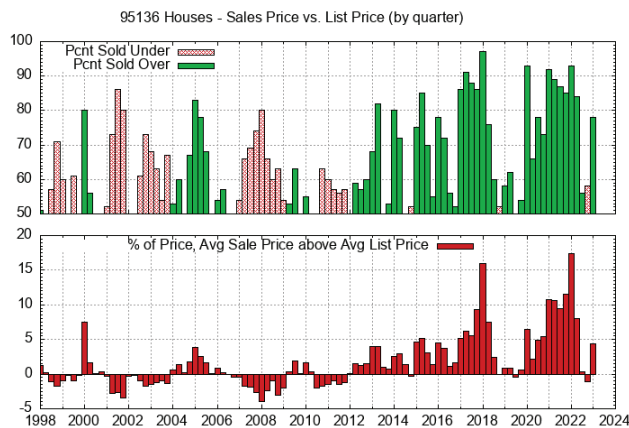
- Almaden Lake Park



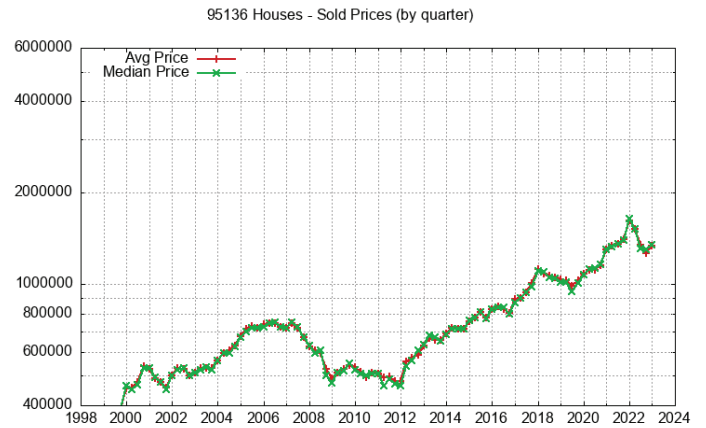
Red circle marks 0.5 miles around 4785 Corrales Dr, San Jose CA 95136

## REAL ESTATE TRENDS

Sales Price vs. List Price for 95136 Houses Sold



Sales Price for 95136 Houses Sold



JulianaLee.com | 650.857.1000 | homes@julianalee.com

VIRTUAL TOUR: JulianaLee.com/4785corralesdr





**JULIANA LEE**  
TEAM

**JLee Realty**

4260 El Camino Real  
Palo Alto, CA 94306

(Adjacent to Crowne Plaza Hotel)



**virtual tour: [julianalee.com/4785corralesdr](https://julianalee.com/4785corralesdr)**

The Juliana Lee Team



JulianaLee.com | 650.857.1000 | homes@julianalee.com