

The Juliana Lee Team Presents

# 4397 STONE CANYON DR

SAN JOSE



**JULIANA LEE**  
TEAM

#### HOME FEATURES

- 5 bedrooms
- 2.5 bathrooms
- 2,408 sq.ft. space
- 6,180 sq.ft lot
- Living & Family room
- Dining & Breakfast rooms
- Office

**Juliana Lee**

**BROKER**

**JLee Realty**

**dre: 00851314 / 02103053**

[JulianaLee.com](http://JulianaLee.com) | 650.857.1000 | [homes@julianalee.com](mailto:homes@julianalee.com)



4397 STONE CANYON DR | **SAN JOSE**

This delightful and spacious home has the space and flexibility to meet many diverse desires. A breakfast area is next to the kitchen and is separated from the dining and living rooms by half-high walls. Whether you are in the kitchen or the living room, you will not be cut-off from others. The family room is also adjacent to the kitchen but it offers privacy from the formal entertaining area and a cheerful fireplace.

A small office near the front door enables you to take care of any business meetings without traveling through your home. Upstairs, all 5 bedrooms are good sized. The three smallest bedrooms are slightly over 11' x 12' providing room for studying or entertainment.



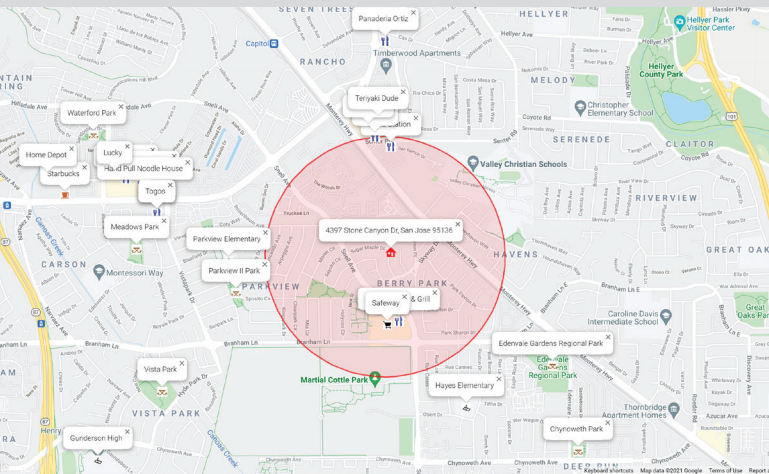
**NEARBY ATTRACTIONS**

Short walk to:

- Safeway
- Kampai Sushi & Grill
- Edenvale Gardens Regional Park
- Martial Cottle Park

Short bike ride to:

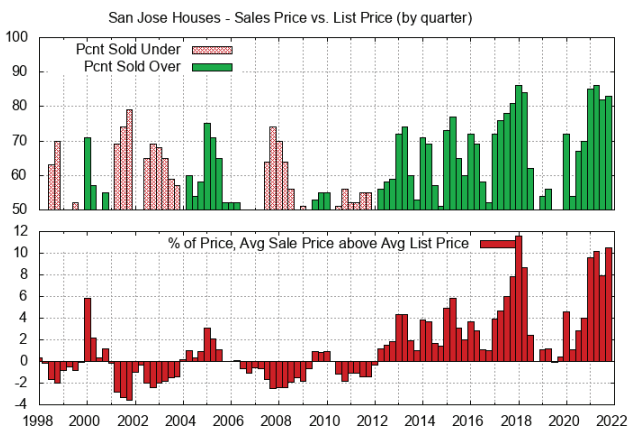
- La Costa Mexican
- Lee's Sandwiches
- Trine's Cafe
- La Ceiba
- Teriyaki Dude
- Mountain Mike's Pizza
- Los Compadres
- Hoa Sen Tofu
- Marina Grocery
- Tamales Lupitas
- China Station
- Lucky
- Kay's Tea House



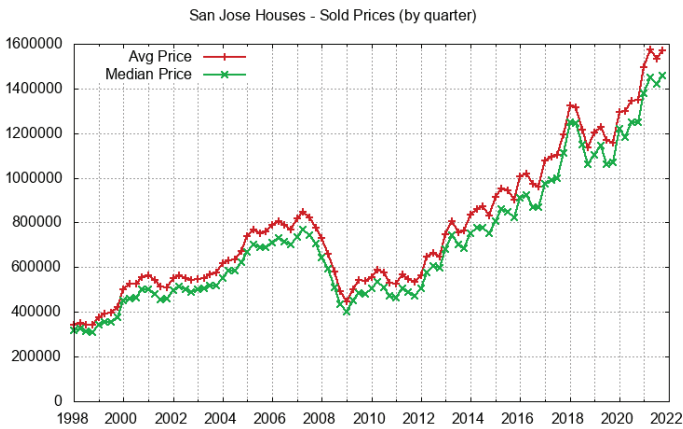
Red circle marks 0.5 miles around 4397 Stone Canyon Dr, San Jose CA 95136

**REAL ESTATE TRENDS**

Sales Price vs. List Price for San Jose Houses Sold



Sales Price for San Jose Houses Sold



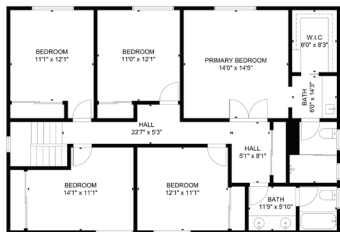
JulianaLee.com | 650.857.1000 | homes@julianalee.com

VIRTUAL TOUR: [JulianaLee.com/4397stonecanyon](https://JulianaLee.com/4397stonecanyon)





GROSS INTERNAL AREA  
TOTAL 2,100 sq. ft.  
FLOOR 1 1,289 sq. ft. FLOOR 2 1,076 sq. ft.  
ENCLOSURE AREA GARAGE 40 x 41 ft.  
SEE ALSO CONSTRUCTION SPECIFICATIONS, ACTUAL 1999 10001







## **JLee Realty**

4260 El Camino Real  
Palo Alto, CA 94306

(Adjacent to Crowne Plaza Hotel)



**virtual tour: [julianalee.com/4397stonecanyon](https://julianalee.com/4397stonecanyon)**

## The Juliana Lee Team



JulianaLee.com | 650.857.1000 | [homes@julianalee.com](mailto:homes@julianalee.com)