

The Juliana Lee Team Presents
112 Sleeper Ave
MOUNTAIN VIEW



JULIANA LEE
TEAM

HOME FEATURES

- Single Family Home
- 4 bedrooms
- 3.5 bathrooms
- 2,895 sq.ft. space
- 6,072 sq.ft. lot
- Living room +
- Family room

Juliana Lee
TEAM LEADER/BROKER
JLee Realty
dre: 00851314 / 02103053

JulianaLee.com | 650.857.1000 | homes@julianalee.com

112 SLEEPER AVE | MOUNTAIN VIEW

This spacious 2 story house was designed to create a grand impression. When stepping inside you will be in a 2-story high foyer with an open living room and dining room (partially separated by a floor to ceiling fireplace) to your right, a staircase running from right to left up to the second story, and a passage way on your left leading to the family room and the garage.

Just behind the dining room is a spacious and efficient kitchen with a breakfast area to the left of it. The cheerful kitchen features white recessed panel cabinets, tile counter tops, electric stainless steel appliances, a hardwood floor, and recessed lighting.

Both the breakfast area and the family room have triple wide sliding glass doors leading out to the backyard. A used brick

fireplace surrounded on both sides by built-in wood bookcases, which along with the oak floor create a comfortable relaxing family room.

Two of the four bedrooms upstairs have easy to clean oak floors while the master bedroom and one other bedroom have plush carpets. The master bedroom has a enjoyable bath ensuite with a soaking tub and a walk-in glass shower.

This home located across from Cuesta Park is a short walk away from cafes, markets, and top rated schools.

virtual tour: julianalee.com/112sleeper

NEARBY ATTRACTIONS

Short walk to:

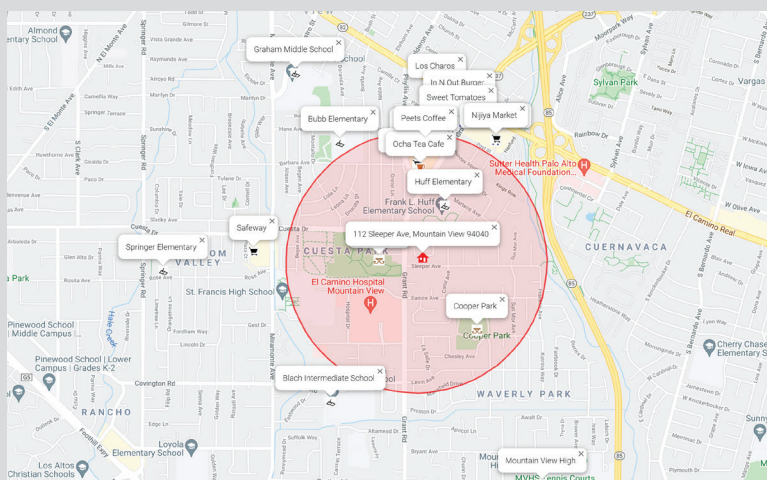
- Peets Coffee
- Ocha Tea Cafe
- 99 Ranch Market
- Nob Hill Foods
- Nijiya Market
- Safeway
- Chaat Paradise
- Sweet Tomatoes
- Los Charos
- In N Out Burger
- Cuesta Park
- Cooper Park
- Huff Elementary

Moderate walk to:

- Graham Middle

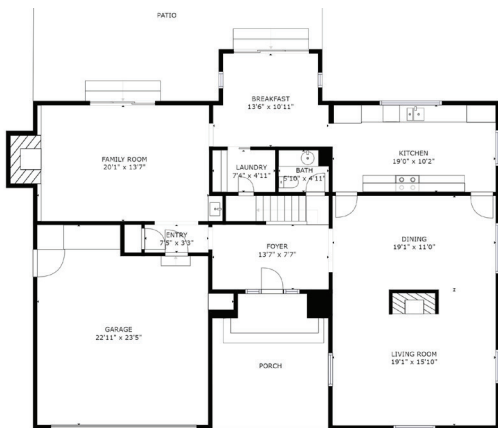
Short bike ride to:

- Mountain View High
- Downtown Mountain View
- Rancho Shopping Center

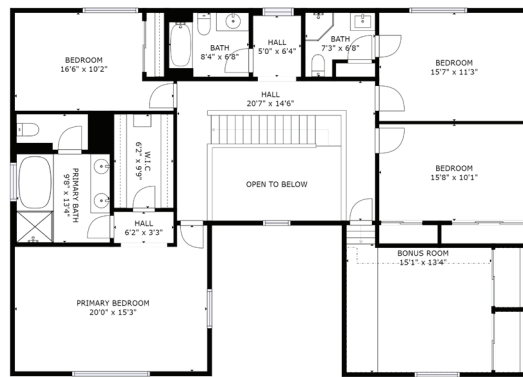


Red circle marks 0.5 miles around 112 Sleeper Ave, Mountain View CA, 94040

112 SLEEPER AVE FLOOR PLANS



GROSS INTERNAL AREA
FLOOR 1: 1420 sq. ft. FLOOR 2: 1451 sq. ft.
EXCLUDED AREAS: GARAGE: 427 sq. ft.
REDUCED HEADROOM BELOW 1.5M: 217 sq. ft.
TOTAL: 2871 sq. ft.
SIZES AND DIMENSIONS ARE APPROXIMATE. ACTUAL MAY VARY.



GROSS INTERNAL AREA
FLOOR 1: 1420 sq. ft. FLOOR 2: 1451 sq. ft.
EXCLUDED AREAS: GARAGE: 427 sq. ft.
REDUCED HEADROOM BELOW 1.5M: 217 sq. ft.
TOTAL: 2871 sq. ft.
SIZES AND DIMENSIONS ARE APPROXIMATE. ACTUAL MAY VARY.



JulianaLee.com | 650.857.1000 | homes@julianalee.com

VIRTUAL TOUR: JulianaLee.com/112sleeper



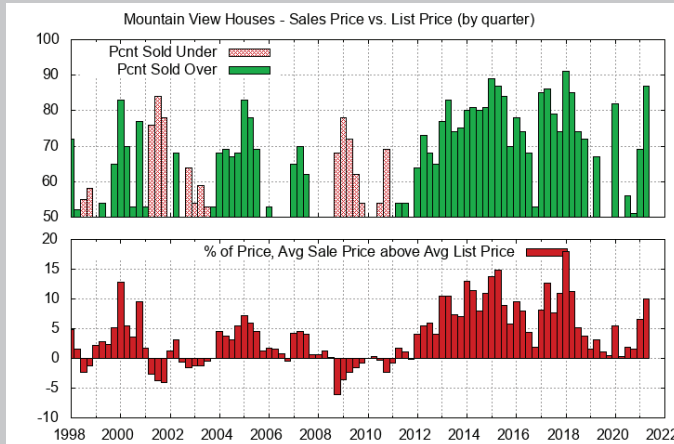


PRESORTED STD
U.S. POSTAGE
PAID
LAS VEGAS NV
PERMIT NO. 3058

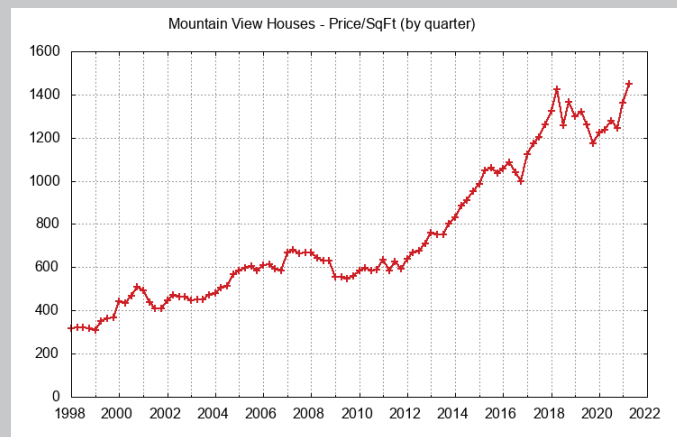
JLee Realty
4260 El Camino Real
Palo Alto, CA 94306

(Adjacent to Crowne Plaza Hotel)

Mountain View Real Estate Trends (julianalee.com)



Sales Price vs. List Price for houses sold



Sales Price per Sq.Ft. for houses sold

The Juliana Lee Team



JulianaLee.com | 650.857.1000 | homes@julianalee.com