



JLEE REALTY



**112 SLEEPER AVE
MOUNTAIN VIEW**

SPACIOUS 2 STORY HOUSE WITH GRAND FOYER NEAR CUESTA PARK

This spacious 2 story house was designed to create a grand impression. When stepping inside you will be in a 2-story high foyer with an open living room and dining room (partially separated by a floor to ceiling fireplace) to your right, a staircase running from right to left up to the second story, and a passage way on your left leading to the family room and the garage.

Just behind the dining room is a spacious and efficient kitchen with a breakfast area to the left of it. The cheerful kitchen features white recessed panel cabinets, tile counter tops, electric stainless steel appliances, a hardwood floor, and recessed lighting.

4 bedrooms

3.5 bathrooms

Living space: 2,895 sq.ft.

Lot size: 6,072 sq.ft.

PRICE UPON REQUEST





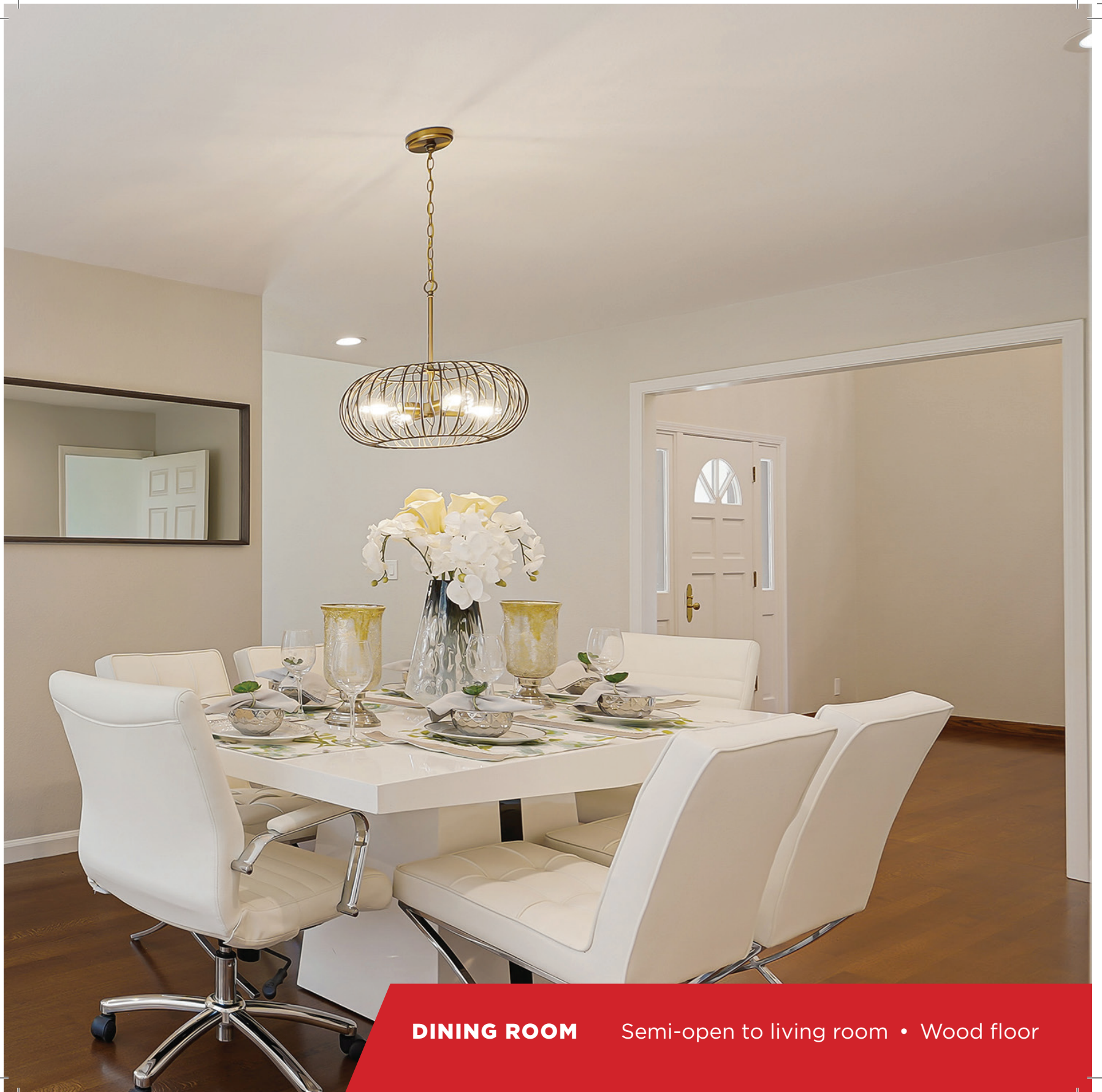




LIVING ROOM

High coffered ceiling • Hardwood floor • Floor to ceiling fireplace





DINING ROOM

Semi-open to living room • Wood floor





KITCHEN

Dual wall ovens • Tile counter tops • White recessed panel cabinets



MASTER SUITE

Light filled



FAMILY ROOM

Hardwood floor • Fireplace • Built-in bookcases

112 SLEEPER AVE • MOUNTAIN VIEW

Home Features

- Living space: 2,895 sq.ft.
- Lot size: 6,072 sq.ft.
- 4 bedrooms, 3.5 bathrooms
- Huff Elementary, Graham Middle, Mountain View High

Kitchen

- Stainless steel appliances
- Smooth surface electric cooktop
- Dual wall mounted ovens
- Tile counter tops
- High tile back splash
- Oak floor

Living Room

- High coffered ceiling
- Oak floor
- Floor to ceiling fireplace separating living & dining rooms
- Recessed lighting

Master Suite

- Coffered ceiling
- Plush carpeted floor
- Recessed lighting
- Large walk-in closet
- White recessed panel vanity with tile counter-top and two recessed sinks
- Modern tile bathroom floor
- Soaking tub in tiled platform with tiled wall
- Glass shower with two tiled walls

Exterior

- Ship lap siding exterior
- Composition shingle roof
- Landscaped front yard with lawn and shrubs
- Fenced back yard with large patio

NEARBY ATTRACTIONS

Short walk to:

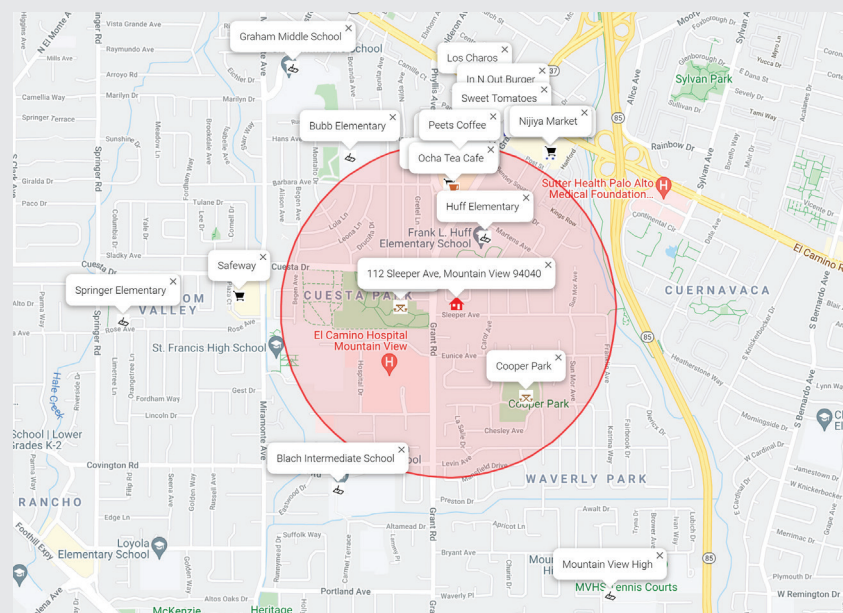
- Peets Coffee
- Nob Hill Foods
- 99 Ranch Market
- Nijiya Market
- Safeway
- Sweet Tomatoes
- Los Charos
- Chaat Paradise
- Sushi 85
- In N Out Burger
- Cuesta Park

Moderate walk to:

- Stevens Creek Trail
- Graham Middle
- Mountain View High

Short bike ride to:

- Downtown Mountain View

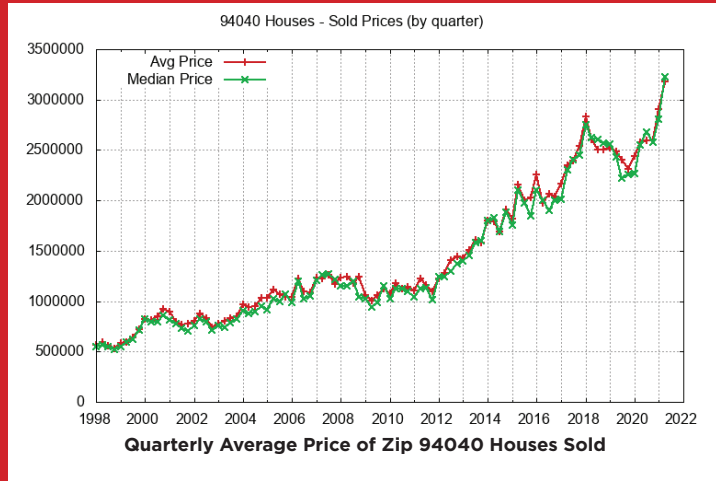


*Red circle marks 0.5 miles around 112 Sleeper Ave, Mountain View CA, 94040

STATISTICS

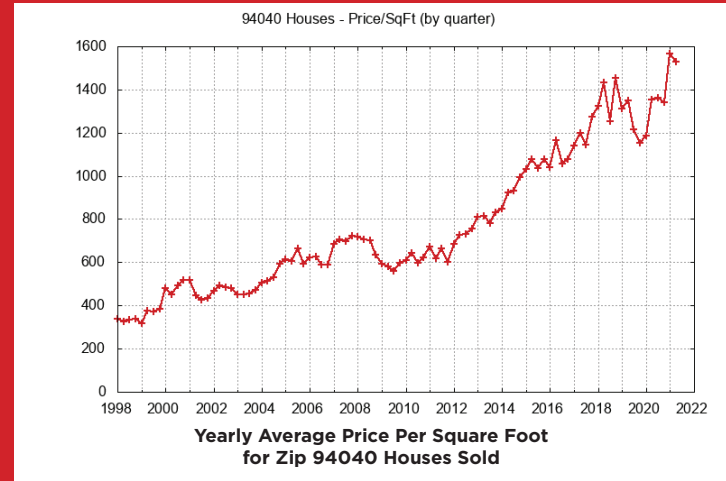
Average and Median Home Price of Zip 94040 Houses Sold

When trying to understand zip 94040 neighborhood values for houses the first and most often real estate trend looked at is either average or median house sales price. The average price can be pushed up by a particularly expensive house being sold. Much less often an especially low price for one or more houses can push the average price down. By looking at both average and median price a quick judgment can be made about any unusually high or low prices.



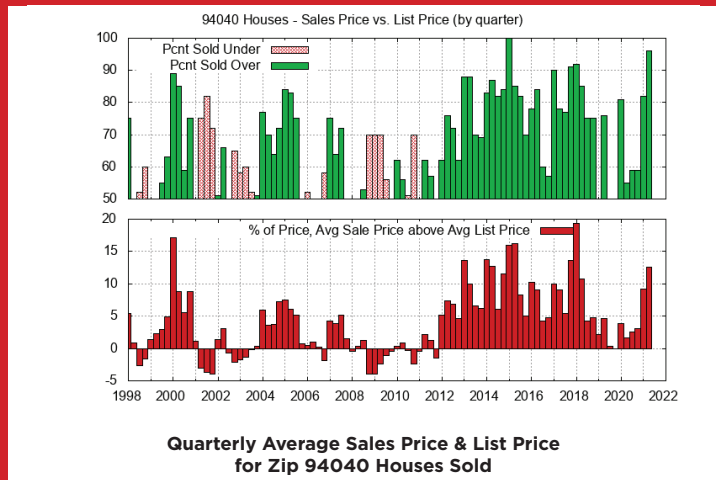
Price Per Square Foot for Zip 94040 Houses Sold

The sales price of a zip 94040 house is affected by its size. Looking at price per square foot gives a partial adjustment for differences between houses. Furthermore if you look at the average size of a zip 94040 house sold you will see that it varies with time. Part of the variation is due to the random nature of which houses are being sold but the trend is for an increase in size with time because when a house is replaced with a newer house, the newer house is almost always larger.



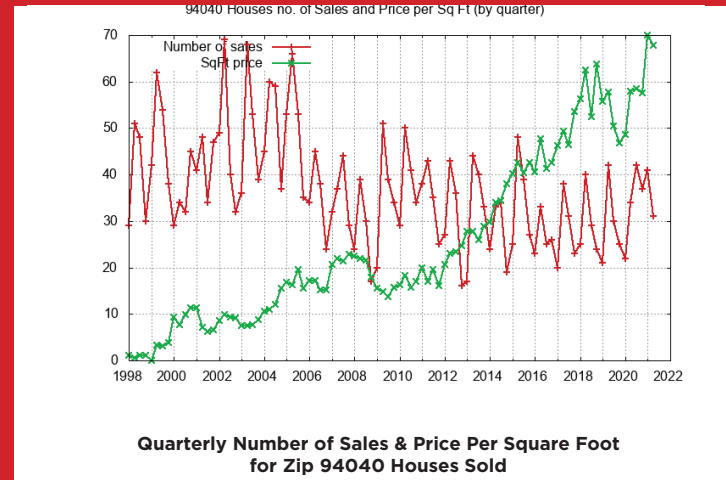
Sales Price vs. List Price for Zip 94040 Houses Sold

Home buyers and sellers want to know the typical relationship between list price and sales price. This relationship varies with city and time. The plots below show trends for this relationship using color coding which generally highlights changes in the market. More zip 94040 homes being sold over list price is a very good indicator of rising home prices. More homes being sold under list price is a very good indicator of falling home prices.



Number of Zip 94040 Houses Sold

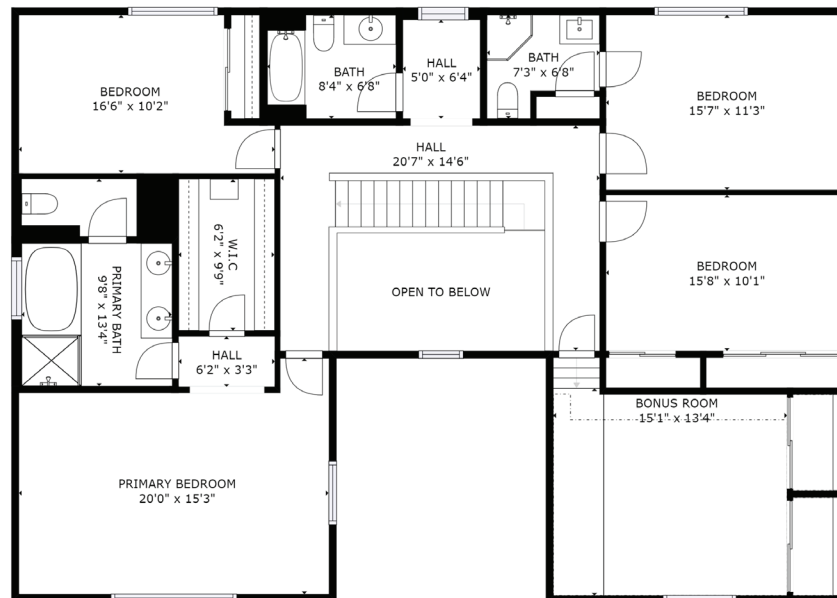
A quick estimate of how active the zip 94040 real estate market is, can be found by looking at the number of houses sold. Locally there is a strong seasonal change in the number of houses sold. The lowest number of houses sold typically occurs around December & January. The highest number of houses sold typically occurs around May. Price changes do not track the seasonal change in the number of houses sold.



Ground Floor



2nd Story





JLEE REALTY

JulianaLee.com/112sleeper



JLEE REALTY

4260 El Camino Real,
Palo Alto, CA 94306

JulianaLee.com | 650.857.1000 | homes@julianalee.com

"I believe honesty, integrity, hard work, commitment and creativity are all necessary to craft a truly successful real estate transaction."



Juliana Lee 李文

MBA/LL.B.

Team Leader/Broker

dre# 00851314/ 02103053

李文房地產做的最好

Over 30 Years of Experience in 30+ Silicon Valley cities