

The Juliana Lee Team Presents
651 PORT DR #203
SAN MATEO



JULIANA LEE
TEAM

HOME FEATURES

- 1 bedroom
- 1 bathroom
- 746 sq.ft. space
- 1 garage space
- Balcony
- Community beach
- Community pool

Juliana Lee

BROKER

JLee Realty

dre: 00851314 / 02103053

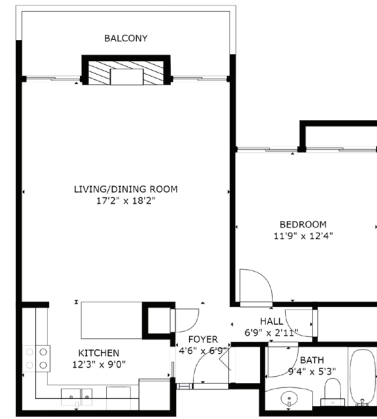
JulianaLee.com | [650.857.1000](tel:650.857.1000) | homes@julianalee.com

651 PORT DR #203 | SAN MATEO

Located in the Mariner's Island Community, sheltered beaches are only a few steps away. The association's playground is right on a beach with the community swimming pool next to it. Why rent when you can own part of an island community with its own beach and swimming pool?

This delightful condo has a spacious living room with a fireplace centered between two sets of sliding glass doors that lead out to its private balcony. The well planned kitchen features stainless steel appliances, white cabinets, lovely tile walls, faux stone counter tops, and a breakfast bar separating the kitchen from the dining area.

The natural light filled, ample sized bedroom, has a carpeted floor and room for a desk.



FLOOR 1

GROSS INTERNAL AREA
FLOOR 1: 732 sq. ft.
TOTAL: 732 sq. ft.
SIZES AND DIMENSIONS ARE APPROXIMATE. ACTUAL MAY VARY.



NEARBY ATTRACTIONS

Short walk to:

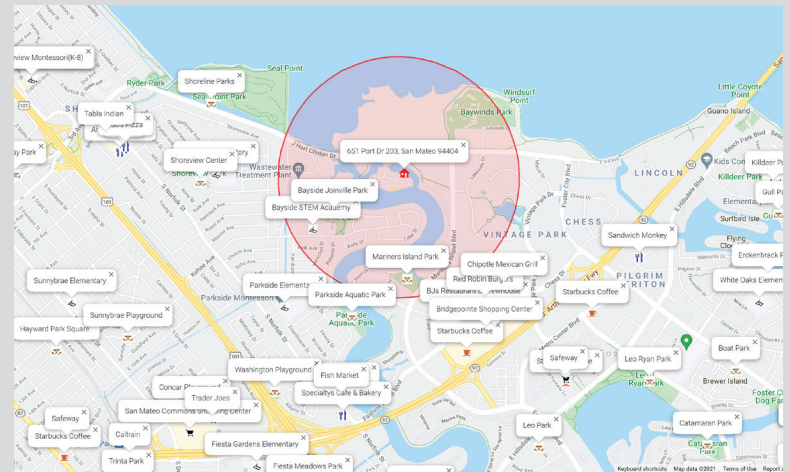
- Baywinds Park
- Seal Point Park
- Mariners Island Park
- Bayside Joinville Park

Short bike ride to:

- Safeway
- Trader Joes
- San Mateo Commons Shopping Center
- Caltrain

Moderate walk to:

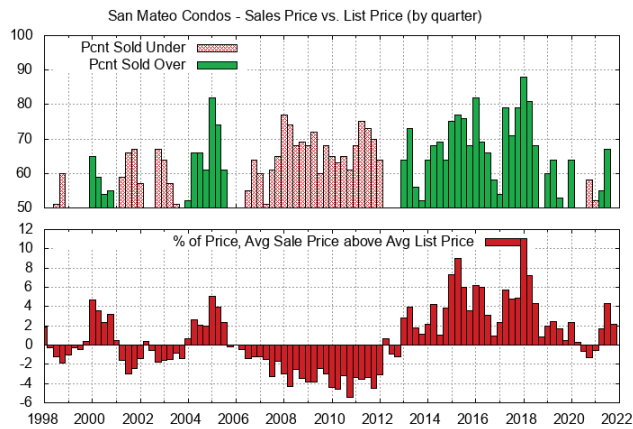
- Chipotle Mexican Grill
- Red Robin Burgers
- BJ's Restaurant
- Starbucks Coffee
- Mimi's cafe
- Bridgepointe Shopping Center



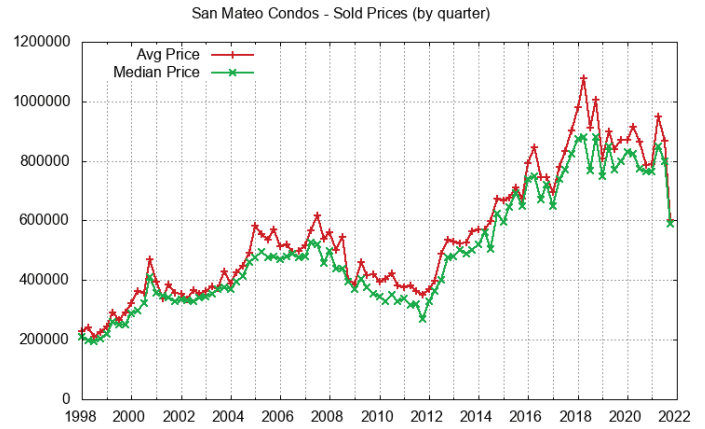
Red circle marks 0.5 miles around 651 Port Dr #203, San Mateo CA 94404

REAL ESTATE TRENDS

Sales Price vs. List Price for San Mateo Condos Sold



Sales Price for San Mateo Condos Sold



JulianaLee.com | 650.857.1000 | homes@julianalee.com

VIRTUAL TOUR: JulianaLee.com/651port





JULIANA LEE
TEAM

JLee Realty

4260 El Camino Real
Palo Alto, CA 94306

(Adjacent to Crowne Plaza Hotel)



virtual tour: julianalee.com/651port

The Juliana Lee Team



JulianaLee.com | 650.857.1000 | homes@julianalee.com