

The Juliana Lee Team Presents
10745 N DE ANZA BLVD #111
CUPERTINO



JULIANA LEE
TEAM

HOME FEATURES

- 3 bedrooms
- 2 bathrooms
- 1,460 sq.ft. space
- Central AC
- Inside laundry
- Triple pane windows

Walk to cafes & shops

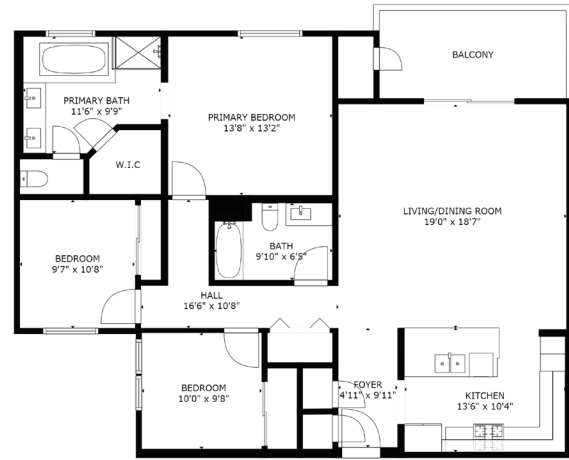
Juliana Lee
BROKER
JLee Realty
dre: 00851314 / 02103053

JulianaLee.com | 650.857.1000 | homes@julianalee.com

10745 N DE ANZA BLVD 111 | CUPERTINO

This delightful open contemporary Cupertino condo is within a short walk of many cafes and stores. It features triple pane windows, central AC, and an energy efficient thermostat. Inside laundry and two car underground parking provide easy living. A private balcony gives you an outdoor spot to relax and have your own small garden.

Wood plank laminate flooring makes it easy to clean. The kitchen features Bosch appliances, granite counter tops, recessed lighting, and modern flat wood finish cabinets. The open floor plan provides flexibility and space for both entertaining and family living.



GROSS INTERNAL AREA
FLOOR 1: 1332 sq. ft.
TOTAL: 1332 sq. ft.
SIZES AND DIMENSIONS ARE APPROXIMATE. ACTUAL MAY VARY.



NEARBY ATTRACTIONS

Short walk to:

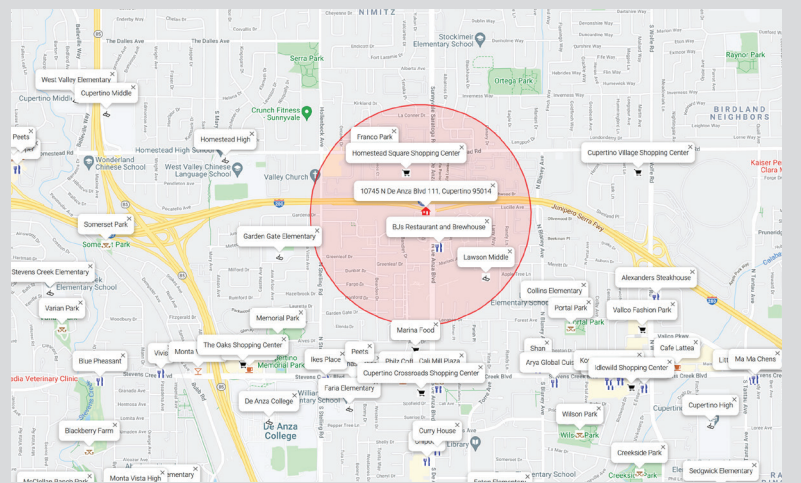
- Safeway
- Starbucks
- Chipotle Mexican Grill
- Pho Hoa Noodle
- Homestead Square Shopping Center
- Franco Park
- BJs Restaurant
- Bagel Street Cafe
- Marina Food
- Philz Coffee
- Cali Mill Plaza

Moderate walk to:

- Cupertino Village Shopping Center
- Homestead High
- Memorial Park
- Peets
- Ikes Placer

Short bike ride to:

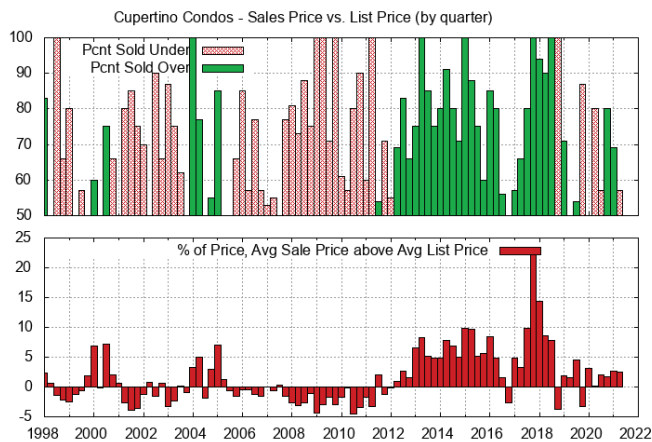
- De Anza College



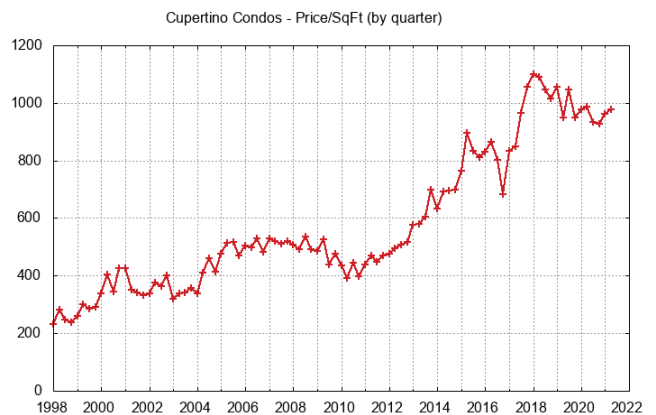
Red circle marks 0.5 miles around 10745 N De Anza Blvd, Cupertino CA 95014

REAL ESTATE TRENDS

Sales Price vs. List Price for Cupertino Condos Sold



Price Per Square Foot for Cupertino Condos Sold



JulianaLee.com | 650.857.1000 | homes@julianalee.com

VIRTUAL TOUR: JulianaLee.com/10745ndeanza





PRESORTED STD
U.S. POSTAGE
PAID
LAS VEGAS NV
PERMIT NO. 3058

JLee Realty
4260 El Camino Real
Palo Alto, CA 94306

(Adjacent to Crowne Plaza Hotel)



virtual tour: julianalee.com/10745ndeanza

The Juliana Lee Team



JulianaLee.com | 650.857.1000 | homes@julianalee.com