

The Juliana Lee Team Presents  
**10745 N DE ANZA BLVD #111**  
CUPERTINO



**JULIANA LEE**  
TEAM

**HOME FEATURES**

- 3 bedrooms
- 2 bathrooms
- 1,460 sq.ft. space
- Central AC
- Inside laundry
- Triple pane windows

Walk to cafes & shops

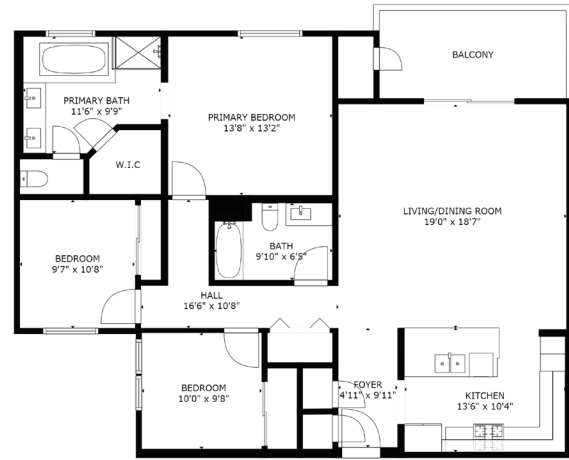
**Juliana Lee**  
BROKER  
JLee Realty  
dre: 00851314 / 02103053

JulianaLee.com | 650.857.1000 | homes@julianalee.com

# 10745 N DE ANZA BLVD 111 | CUPERTINO

This delightful open contemporary Cupertino condo is within a short walk of many cafes and stores. It features triple pane windows, central AC, and an energy efficient thermostat. Inside laundry and two car underground parking provide easy living. A private balcony gives you an outdoor spot to relax and have your own small garden.

Wood plank laminate flooring makes it easy to clean. The kitchen features Bosch appliances, granite counter tops, recessed lighting, and modern flat wood finish cabinets. The open floor plan provides flexibility and space for both entertaining and family living.



GROSS INTERNAL AREA  
FLOOR 1: 1332 sq. ft.  
TOTAL: 1332 sq. ft.  
SIZES AND DIMENSIONS ARE APPROXIMATE. ACTUAL MAY VARY.



## NEARBY ATTRACTIONS

### Short walk to:

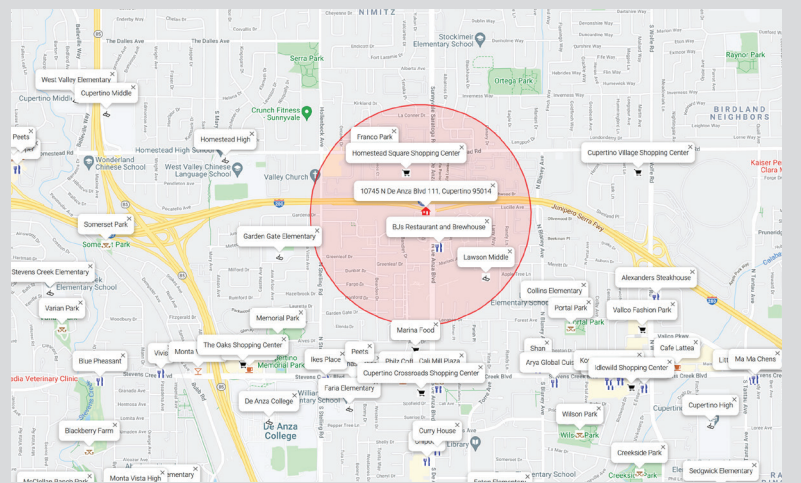
- Safeway
- Starbucks
- Chipotle Mexican Grill
- Pho Hoa Noodle
- Homestead Square Shopping Center
- Franco Park
- BJs Restaurant
- Bagel Street Cafe
- Marina Food
- Philz Coffee
- Cali Mill Plaza

### Moderate walk to:

- Cupertino Village Shopping Center
- Homestead High
- Memorial Park
- Peets
- Ikes Placer

### Short bike ride to:

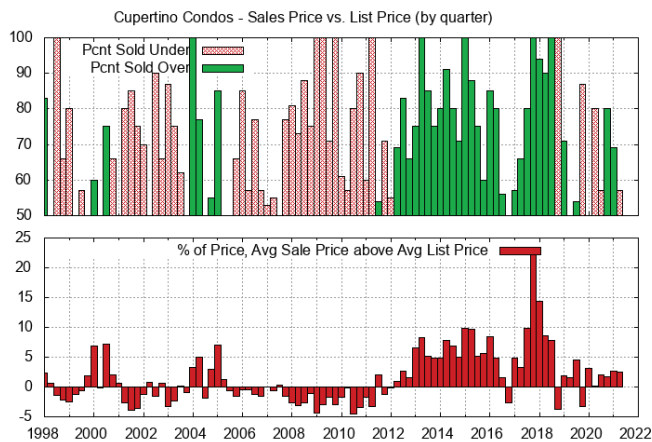
- De Anza College



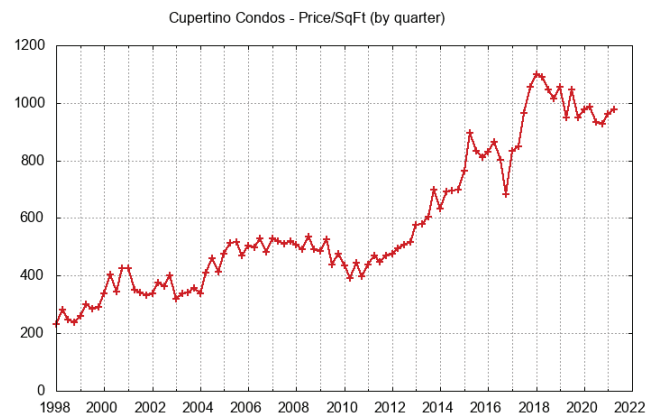
Red circle marks 0.5 miles around 10745 N De Anza Blvd, Cupertino CA 95014

## REAL ESTATE TRENDS

### Sales Price vs. List Price for Cupertino Condos Sold



### Price Per Square Foot for Cupertino Condos Sold



JulianaLee.com | 650.857.1000 | homes@julianalee.com

VIRTUAL TOUR: JulianaLee.com/10745ndeanza





PRESORTED STD  
U.S. POSTAGE  
PAID  
LAS VEGAS NV  
PERMIT NO. 3058

**JLee Realty**  
4260 El Camino Real  
Palo Alto, CA 94306

(Adjacent to Crowne Plaza Hotel)



**virtual tour: [julianalee.com/10745ndeanza](https://julianalee.com/10745ndeanza)**

### The Juliana Lee Team



JulianaLee.com | 650.857.1000 | homes@julianalee.com