

*Juliana Lee*  
*presents*

*15096 Danielle Place, Monte Sereno*







---

We invite you to this beautiful Tudor-style masterpiece, perfectly situated on a spacious cul-de-sac lot & spanning over 1 acre in size!

Step into this grand estate through a stunning formal entry way to indulge in every inch of its 4,556 sq. ft. of living space & elegantly crafted architectural design. This palatial treasure is a perfect fit for a large family - boasting 6 spacious bedrooms & 5.5 en-suite baths - or for those simply looking for a luxurious get away.

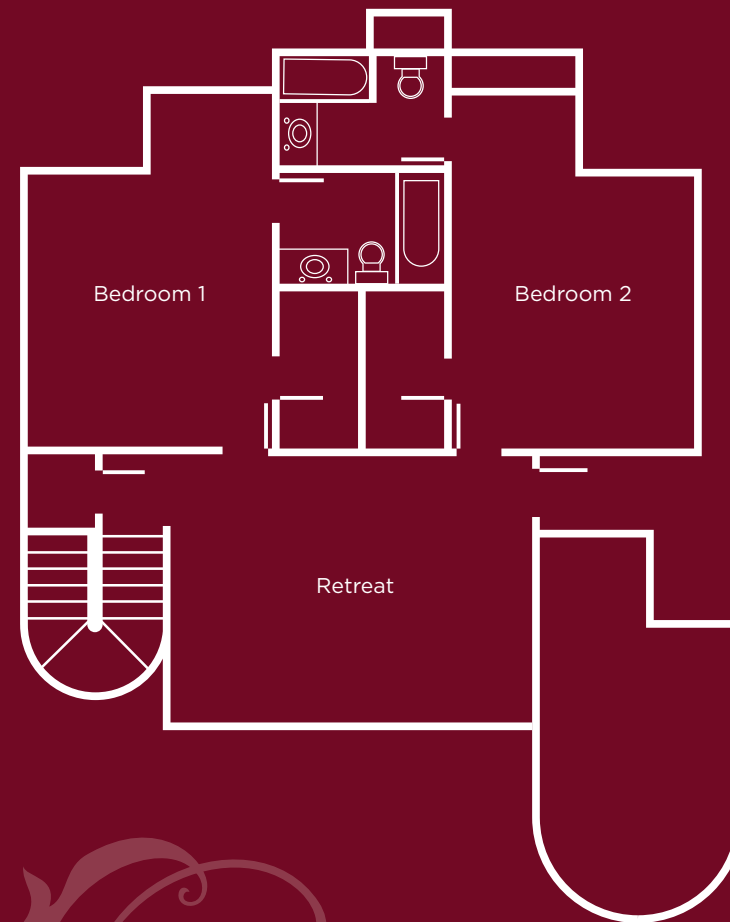
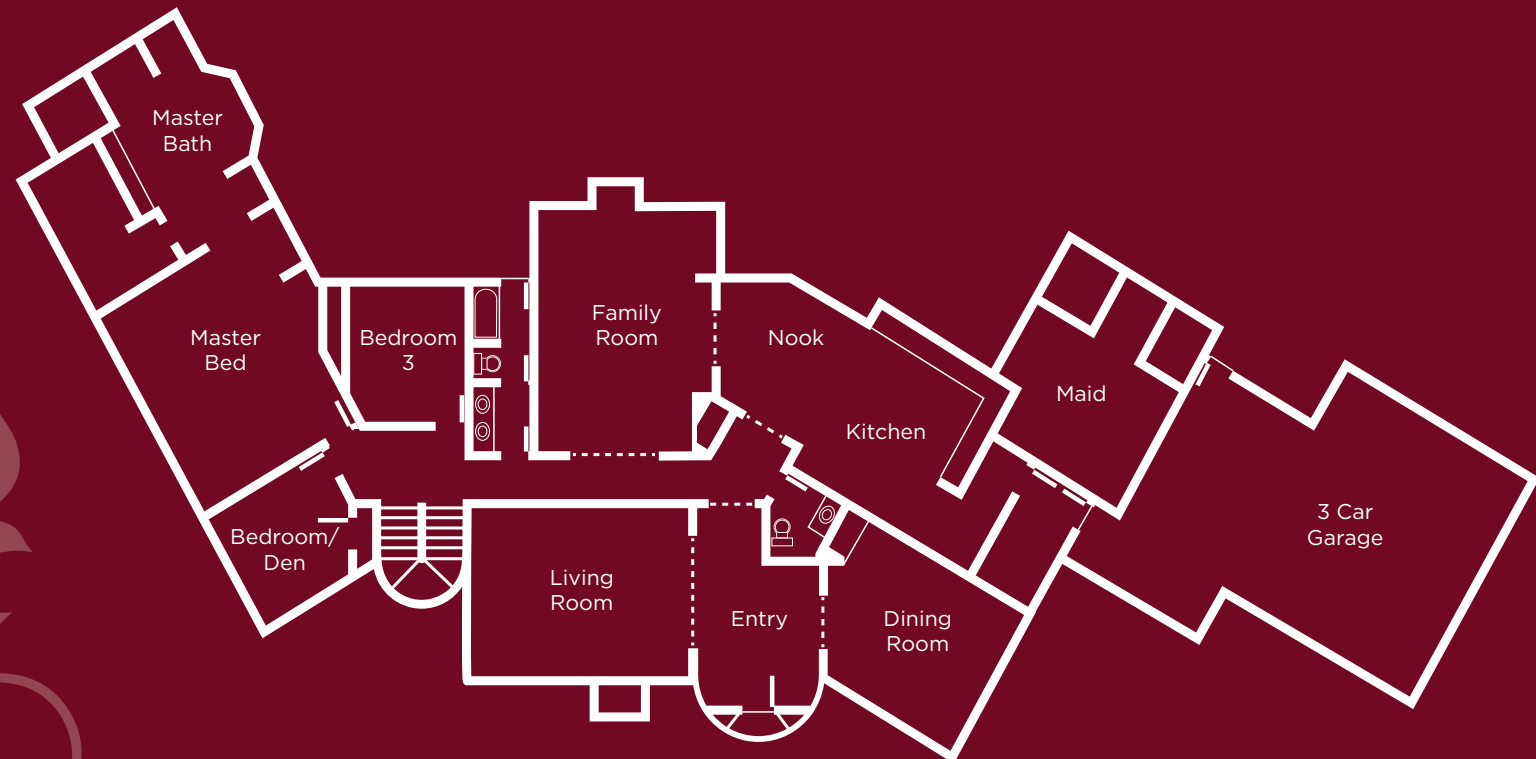




Beautiful bay windows & an open layout allow for ample natural lighting & views throughout.

Pamper yourself with multiple dining options, including a bright & airy dining room, breakfast room & state of the art gourmet kitchen. Be sure not to miss the wine refrigerator & mini wet bar!





The master bedroom features a private en-suite bath & walk in closet with plentiful storage space. A lavish stall shower coupled with a relaxing tub is the perfect complement to this resort-like setting.

For added convenience, a recreation room & private office space are available just down the hall.







Enjoy a breathtaking & gorgeous landscape overlooking the Santa Cruz mountains, even over your morning coffee.

This fabulous paradise is truly complete with a sparkling swimming pool, redesigned fountain & tennis court - all of which are privately accessible via any area from the home.





Upon entry, you will be swept into & enthralled by this home's sophisticated beauty.

Classic & refined, it also features three gas burning fireplaces, gorgeous high vaulted ceilings, hardwood & marble flooring, & an attached 3 car garage.







For more information, please contact:



*Juliana Lee*

MBA/LL.B, CRS, SRES  
BRE# 00851314

(650) 857-1000  
(650) 454-8539

JulianaLee.com  
homes@julianalee.com

**kw**  
KELLER WILLIAMS.

